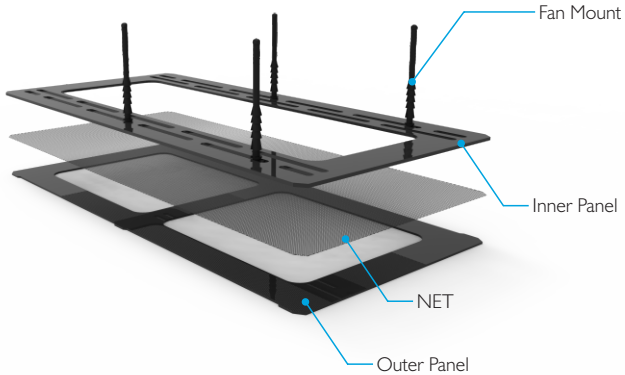




DA2 PAP KIT



Overview

The performance acrylic panel kit is designed to replace the existing panels with ones that feature larger openings for increased air flow and the ability to fit fans directly to the panels using the included silicon fans mounts. The fan mounts allow for both 120 and 140mm fans to be used and as they fit below the frame, save 15mm of space compared to using the horizontal brackets.

The performance panels can be used in situations where additional cooling is required for high power components or in conjunction with the tempered glass side panels in order to compensate for the reduced ventilation.

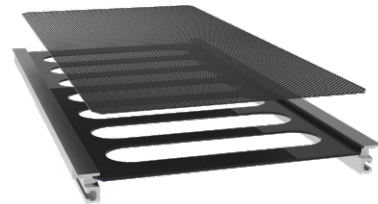
Removing the pre-installed panels

Before installing the new acrylic panels, the original ones will need to be removed. We recommend doing this without any components installed in the case for ease. The diagram below shows the upper panels but the same applies to the lower side panels.

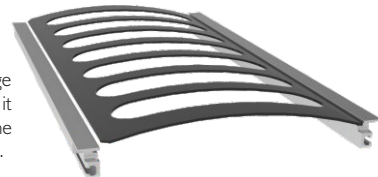
1. Carefully bend the outer panel until the 4 notch cutouts clear the side of the frame, then lift it out



2. Remove the PVC NET.



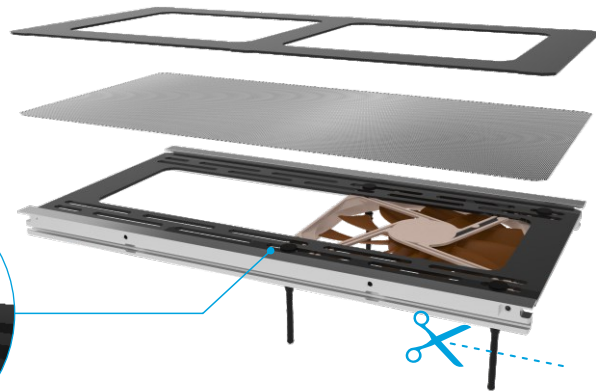
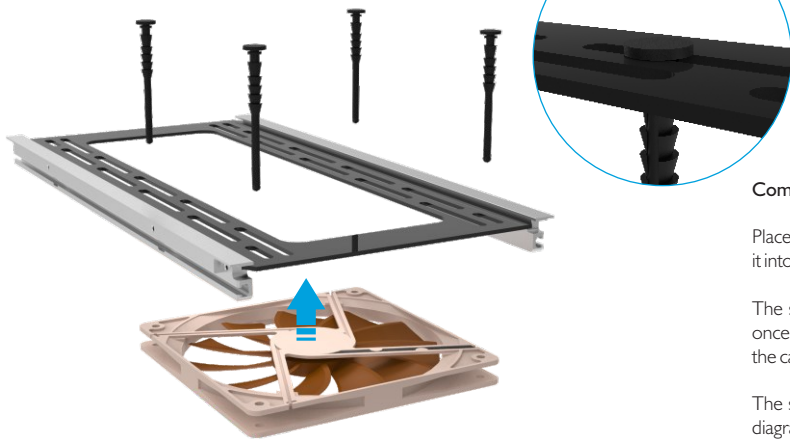
3. Bend the inner panel until the edge clear the side of the frame, then lift it out. The inner panel is thicker than the upper one and will require more force.



Fitting Inner Panel and Fan

The panels are installed by reversing the removal procedure. Start with the inner panel and ensure that one edge is in the frame track then carefully bend the panel until the other side can be placed into the opposing frame track.

Fans should be installed prior to the NET or outer panel and should be fitted using the supplied silicon fan mounts. These are used by placing them through the appropriate slots in the panel, then pulling them through the mounting holes in the fan.



Completing Installation

Place the NET onto the inner panel then fit the outer panel to the frame by carefully bending it into the frame track.

The silicon fan mounts are longer than required in order to make installation easier, but once you have tested the configuration, they can be cut so that they no longer protrude into the case.

The same procedure is applicable to the upper and lower panels of the case. Installation diagrams are shown without the rest of the case for the purpose of clarity.



Designed in Europe. Copyright © 2020. All Rights Reserved.